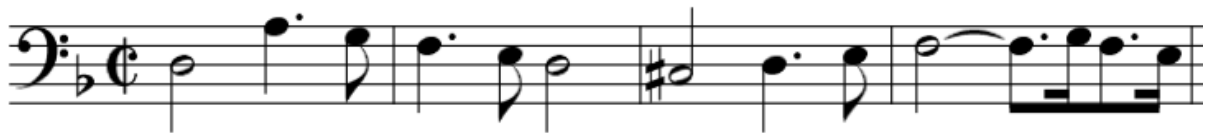




Contrapunctus VI is more complex. The cello starts with a dotted version of the main theme:



After the first bar the first violin enters with a double-speed variation of the *inverted* theme, which, of course, fits!



Jaunty dotted rhythms give a “French style” which is enhanced by rapid clusters of notes in one voice being answered by scintillations of very rapid notes in an answering voice.